

12.8V 150ah Lifepo4 Battery Pack 12.8v Lithium Ion Batteries 12v 400ah Solar Battery

Our Product Introduction

for more products please visit us on enookbattery.com

Basic Information

- Place of Origin: china
- Brand Name: Enook
- Model Number: Enook Battery Pack
- Payment Terms: TT PAYPAL



Product Specification

- Charge Voltage: 14.6V±0.2V
- Installation: IP65
- OEM/ODM: Acceptable
- Specification: 12.8V150AH
- Peak Current: 240A (<3s)
- Terminal Type: Anderson Plug
- Battery Size: 560x300x235mm
- Product Name: 12.8V 150ah Lifepo4 Battery Pack
- Highlight: 12.8V 150ah Lifepo4 battery pack ,
12v 400ah solar battery ,
12.8v lithium ion batteries



More Images



Product Description

Product Description:

One of the key features of our Lithium Ion Battery Pack is its charge voltage of $14.6V \pm 0.2V$. This means that you can easily charge the battery pack using a standard charger, without worrying about overcharging or damaging the battery.

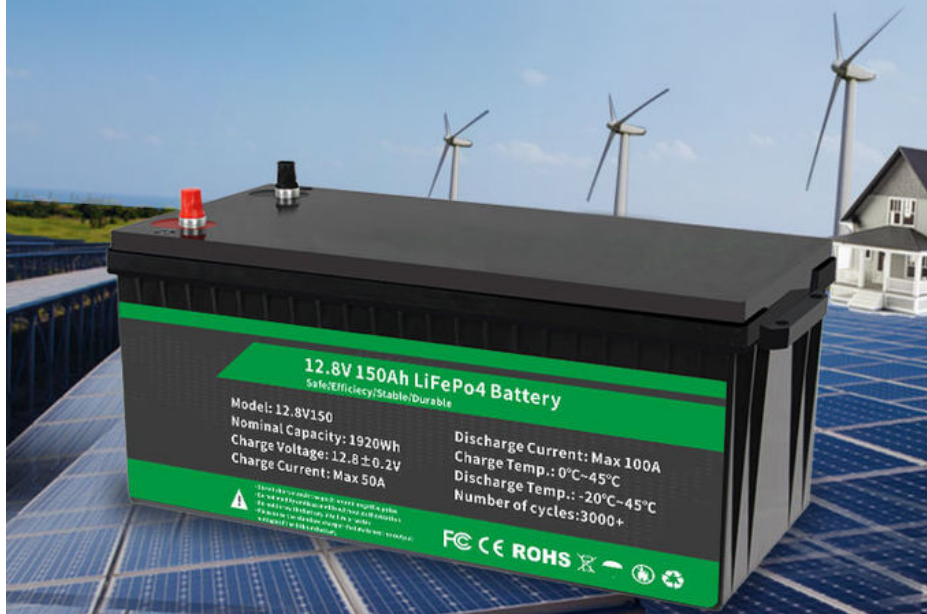
Another important feature of our battery pack is its long life cycle. The Lithium Ion Battery Pack can be cycled up to 2000 times at 85% dose, 5000 times at 65% dose, and 8000 times at 40% dose. This means that you can use your battery pack for several years before needing to replace it.

Our Lithium Ion Battery Pack also comes with a built-in Battery Management System (BMS) function that protects the battery from overcharging, overdischarge, overcurrent, short circuit, and other potential hazards. This ensures that your battery pack lasts longer and remains safe to use.

The Lithium Ion Battery Pack also boasts a high continuous discharge current of 120A and a peak current of 240A (<3s). This makes it perfect for high-performance electric bikes that require a lot of power to operate.

12V150AH LiFePO4 Battery

RV/home energy storage/PV/solar off-grid



Dimensions

Product View

L*H*W:520*238*220mm



Reliable ABS Case
Resistance To Heat&Shock



M8 Terminal
superb conductivity



Handle
Easy to carry or remove

Features:

Product Name: 12.8V 150ah Lifepo4 Battery Pack

Installation: IP65

OEM/ODM: Acceptable

Continuous discharge current: 120A

Discharge Cut-off Voltage: 10V

Type: Lithium ion battery pack
Voltage: 48v 12v 24v
Capacity:100ah 150ah 200ah

LiFePO4 Battery

More Safe Density,High Life,Long Cycle times 3000+



BATTERY MANAGEMENT SYSTEM



Balance Function



Overvoltage Protection



Overcharge Protection



Over discharge Protection



Overcurrent Protection



Short circuit Protection

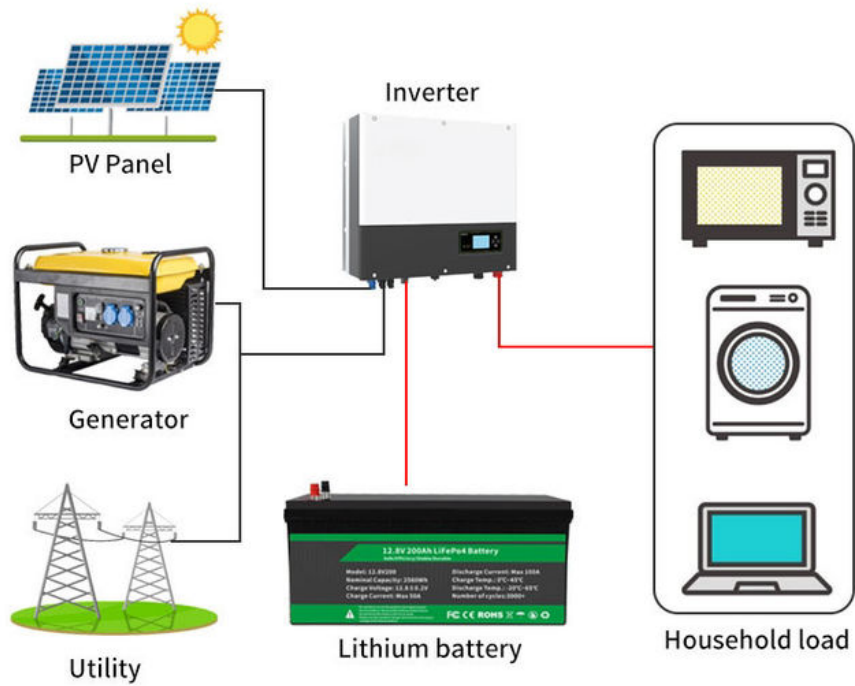


Temperature Protection



Anti Reverse Charging

Product Connection Diagram



Technical Parameters:

Product Name	12.8V 150ah Lifepo4 Battery Pack
Battery size	560x300x235mm
Specification	12.8V150AH
Terminal Type	Anderson Plug
Continuous discharge current	120A
Charge Voltage	14.6V±0.2V
Cycle life	Deep Cycle Life 4000 Times, Life Span Is More Than 10 Years
BMS function	Overcharge, Overdischarge, Overcurrent, Short Circuit, Etc.
Installation	IP65
Discharge Cut-off Voltage	10V

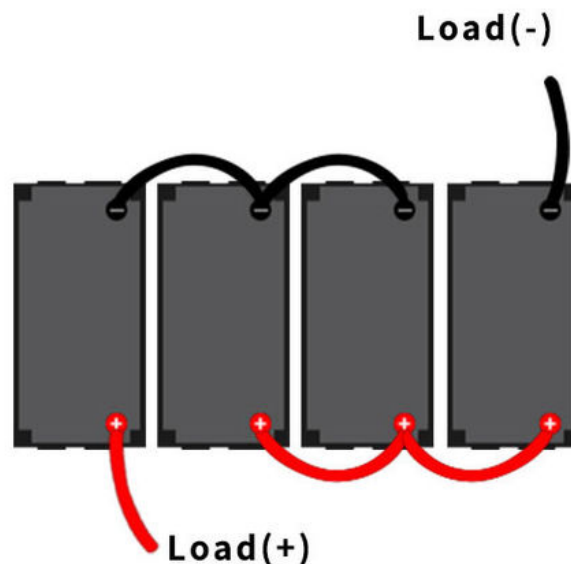
Comparison



✓ Reduced 2/3 weight	Weight	✗ 3 times the weight
✓ 3000+ Cycle	Cycle Times	✗ 200-500 Cycle
✓ >10 Years Service Life	Life cycle	✗ 2-3 Years
✓ Stable and safety	Function	✗ Unsafe and easy To explode

Product Details

Connection In Parallel (Maximum of 4 Batteries)



12v(12.8V)400Ah Battery System

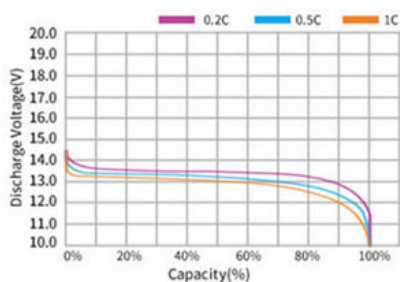
Applications:

The Enook Battery Pack has a long life cycle. It can be used up to 2000 times at 85% dose, 5000 times at 65% dose, and 8000 times at 40% dose. It also has a deep cycle life of 4000 times and a life span of more than 10 years. These features make the Enook Battery Pack a reliable and long-lasting power source for a variety of different applications.

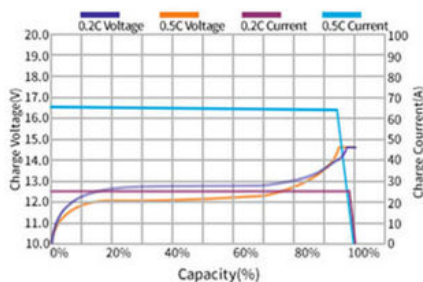
It is also well-suited for use in solar power systems, backup power supplies, and other applications where reliable and efficient power is required. With its high capacity and long life cycle, the Enook Battery Pack is a great choice for anyone looking for a high-quality Lithium Ion Battery Pack.

Battery Characteristic Curve

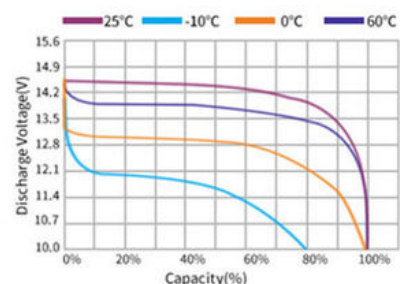
Different Rate Discharge Curve @25°C



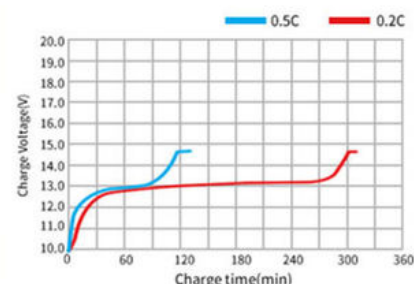
Charge Characteristics of capacity-voltage @0.2C&0.5C,25°C



Different Temperature Discharge Curve @0.5C,25°C

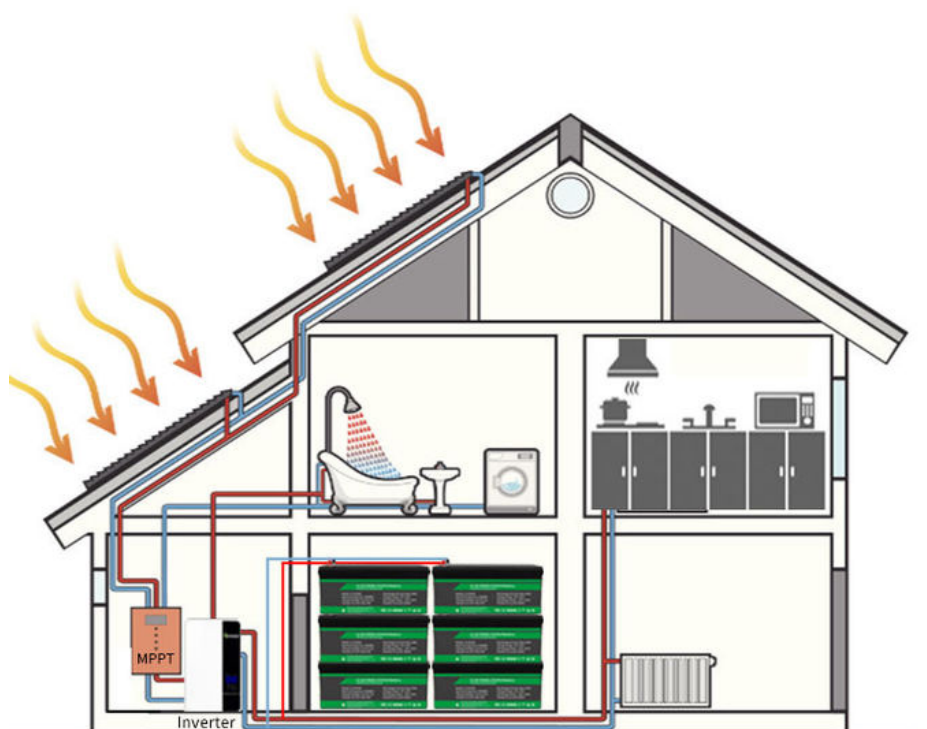


Charge Characteristics of time-voltage @0.2C0.5C,25°C

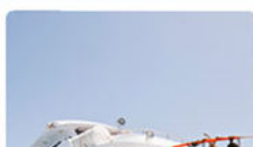


Household Energy Storage Usage

6 batteries can be connected in parallel



Application Scope





RV



Marine



Outdoor Activities



Solar

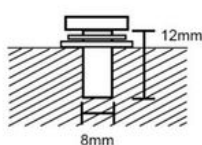


Power Backup



Golf Cart

Customization:



Smart BMS



Battery Terminal Protective Cover



M8 Terminal



Durable Handle



Support and Services:

The Lithium Ion Battery Pack comes with a product technical support and services that include:

Assistance with installation and setup of the battery pack

Troubleshooting and diagnosis of any issues with the battery pack

Maintenance and repair services to ensure optimal performance of the battery pack

Replacement of defective parts or the entire battery pack if necessary

Expert advice on how to maximize the lifespan of the battery pack and optimize its performance

Our technical support and services team is dedicated to providing prompt and efficient assistance to ensure that our customers are satisfied with their Lithium Ion Battery Pack.

IP65 Waterproof

Waterproof And Dustproof Desing
Typhoon Rainstorm Shallow Deperession



Changsha Enook Technology Co., Ltd



+8617752866093



wendy@enooktech.com



enookbattery.com

ROOM 1717,JIEZUO BUILDING, NO. 828, SECTION 1, FURONG SOUTH ROAD, TIANXIN DISTRICT,
CHANGSHA, HUNAN